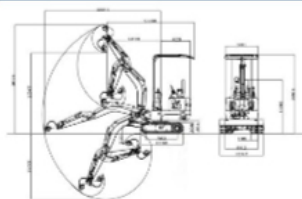


R10 ECO MINI EXCAVATOR



HIGHLIGHTING ADVANTAGES



- The travel motor is enclosed inside to better protect the motor from damage and extend its service life.
- The four-post ceiling is more stable and safer.
- Use thicker high-quality steel, apply plastic molding process, prevent rust and anti-corrosion.
- The hydraulic cylinder is equipped with a cylinder guard to protect it from damage.
- The 360-degree body rotates freely, and the smart body facilitates outdoor work.

STRUCTURAL PARAMETERS

Real weight (kg/lb)	1000/2205
Bucket capacity (m ³ /ft ³)	0.014/0.49
Maximum digging radius (mm/in)	3233/127.3
Maximum digging depth (mm/in)	1833/72.2
Maximum digging height (mm/in)	3021/118.9
Maximum unloading height (mm/in)	2247/88.5
Maximum deflection angle (°)	121
Track extension range (mm/in)	912-1212/35.9-47.7
Engine brand	kubota
Engine model	Z482
Maximum power (Kw/hp)	8.2/11
Number of cylinders	2
Transport length (mm/in)	2430/95.7
Transport width (mm/in)	912/35.9
Transport height (mm/in)	2201/86.7

DETAIL DISPLAY



Three-way ball valve



Operator protection hydraulic lock



Top-mounted boom cylinder + cylinder guard plate



Bilateral Operation system

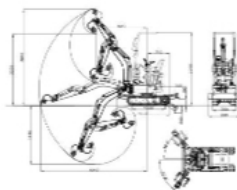


R13 PRO

MINI EXCAVATOR



HIGHLIGHTING ADVANTAGES



- Simple and safe; Compact and flexible, capable of working in elevators
- The pilot armrest boxes on both sides can be flipped up, and the wiring harness adopts linkage protection
- Structural parts are made of stainless steel or plastic to prolong service life.
- Simple and convenient operation, with pilot operation on both sides of the telescopic deflection;
- Plastic diesel tank with large capacity and high internal cleanliness

DETAIL DISPLAY



Four pipelines +
Globe valve



Hydraulic Oil
Cooler



3 pumps combined
configuration



Bilateral Armrest Boxes with
Lift-Up Functionality

STRUCTURAL PARAMETERS

Real weight (kg/ib)	1300/2866
Bucket capacity (m ³ /ft ³)	0.03/1.1
Maximum digging radius (mm/in)	3346/131.7
Maximum digging depth (mm/in)	1843/72.6
Maximum digging height (mm/in)	3011/118.6
Maximum unloading height (mm/in)	2238/88.1
Maximum deflection angle (°)	105
Track extension range (mm/in)	750-990/29.5-39
Engine brand	kubota
Engine model	D722
Maximum power (Kw/hp)	10.2/13.7
Number of cylinders	3
Transport length (mm/in)	2114/83.2
Transport width (mm/in)	750/29.5
Transport height (mm/in)	2289/90.1





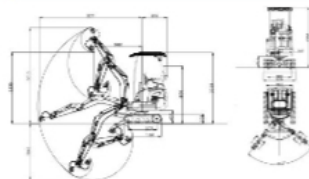
R15 ECO

MINI EXCAVATOR

Brand Model



HIGHLIGHTING ADVANTAGES



- Imported accessories to improve the overall performance of the machine;
- The cylinder is forged in one step, not easy to break, and has a built-in NOK sealing ring;
- Made of high-quality thickened steel and processed by injection molding process, it is rust-proof and corrosion-resistant;
- It has a built-in travel motor and two travel speeds, making it better suited for different locations.
- The boom side swing and crawler telescopic functions are suitable for working in complex environments.

DETAIL DISPLAY



Pilot lock design



High and low speed walking



Counterweight-Real weight:1.5T



Load Sensing Valves

STRUCTURAL PARAMETERS

Real weight (kg/lb)	1500/3307
Bucket capacity (m ³ /ft ³)	0.03/1.1
Maximum digging radius (mm/in)	3274/128.9
Maximum digging depth (mm/in)	1807/71.1
Maximum digging height (mm/in)	3045/119.9
Maximum unloading height (mm/in)	2277/89.6
Maximum deflection angle (°)	92
Track extension range (mm/in)	890-1190/35-46.9
Engine brand	kubota
Engine model	D722
Maximum power (Kw/hp)	10.2/137
Number of cylinders	3
Transport length (mm/in)	2327/91.6
Transport width (mm/in)	983/38.7
Transport height (mm/in)	2243/88.3





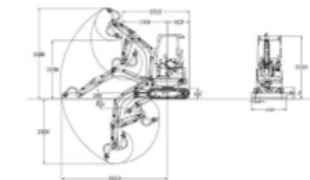
Brand Model

R18 PRO

MINI EXCAVATOR



HIGHLIGHTING ADVANTAGES



- A spacious and comfortable cab with air conditioning, providing you with a comfortable working environment
- The cylinder is forged in one step and is not easily broken, with a built-in NOK sealing ring
- Made of high-quality thickened steel, injection molded, rust and corrosion resistant;
- Using herringbone tracks makes walking on hard surfaces more stable.
- The boom side sway and track extension functions are suitable for working in complex environments.

STRUCTURAL PARAMETERS

Real weight (kg/lt)	1618/4008
Bucket capacity (m ³ /ft ³)	0.045/1.6
Maximum digging radius (mm/in)	3975/158.5
Maximum digging depth (mm/in)	2420/95.3
Maximum digging height (mm/in)	3396/133.7
Maximum unloading height (mm/in)	2182/85.9
Maximum deflection angle (°)	111
Track extension range (mm/in)	989-1309/36.9-51.5
Engine brand	kubota
Engine model	D902
Maximum power (Kw/hp)	11.8/15.8
Number of cylinders	3
Transport length (mm/in)	2403/94.6
Transport width (mm/in)	960/38.9
Transport height (mm/in)	2322/91.4

DETAIL DISPLAY



Top and front protection against falling objects



Large LCD display to monitor the machine's operating status in real time



Eaton swing motor



Counterweight





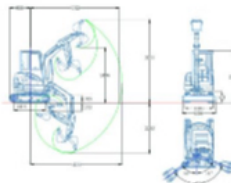
Brand Model

R22 PRO

MINI EXCAVATOR



HIGHLIGHTING ADVANTAGES



- A spacious and comfortable cab with air conditioning, providing you with a comfortable working environment
- The cylinder is forged in one step and is not easily broken, with a built-in NOK sealing ring
- Made of high-quality thickened steel, injection molded, rust and corrosion resistant;
- Using herringbone tracks makes walking on hard surfaces more stable.
- The boom side sway and track extension functions are suitable for working in complex environments.

DETAIL DISPLAY



Two fully open inspection ports



Foldable glass + protective net



Load Sensing Variable Displacement Piston Pump



One-piece casting boom bracket + big arm side swing

STRUCTURAL PARAMETERS

Real weight (kg/lb)	2371.5/5228
Bucket capacity (m ³ /ft ³)	0.054/1.9
Maximum digging radius (mm/in)	4143/163.1
Maximum digging depth (mm/in)	2293/90.3
Maximum digging height (mm/in)	3761/148.1
Maximum unloading height (mm/in)	2496/98.3
Maximum deflection angle (°)	125
Track extension range (mm/in)	1300-1500/51.2-59.1
Engine brand	kubota
Engine model	D1105
Maximum power (Kw/hp)	18.2/24.4
Number of cylinders	3
Transport length (mm/in)	2824/111.2
Transport width (mm/in)	1300/51.2
Transport height (mm/in)	2361/93





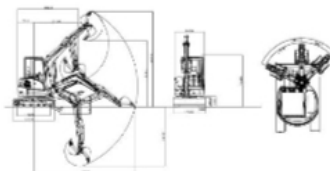
Brand Model

R32 PRO

MINI EXCAVATOR



HIGHLIGHTING ADVANTAGES



- All imported parts, the whole machine performance is more stable;
- Walking full hydraulic pilot control, feet control sensitive;
- Using load sensitive variable plunger piston pump, smooth control, flexible action;
- Increase the driving space, get on and off the bus without obstruction;
- The full-open guard, the rear cover and the side cover can be opened for easy maintenance

STRUCTURAL PARAMETERS

Real weight (kg/lb)	3200/7055
Bucket capacity (m ³ /ft ³)	0.08/2.8
Maximum digging radius (mm/in)	4831/190.1
Maximum digging depth (mm/in)	2827/111.3
Maximum digging height (mm/in)	4563/179.6
Maximum unloading height (mm/in)	3181/125.2
Maximum deflection angle (°)	110
Track extension range (mm/in)	
Engine brand	kubota
Engine model	V1505
Maximum power (Kw/hp)	18.2/24.4
Number of cylinders	4
Transport length (mm/in)	2921/115
Transport width (mm/in)	1550/61
Transport height (mm/in)	2485/97.8

DETAIL DISPLAY



Smart large screen configuration



Flip-up front glass + protective net



Counterweight-Real weight: 3.2Ton



Full open bonnet

